

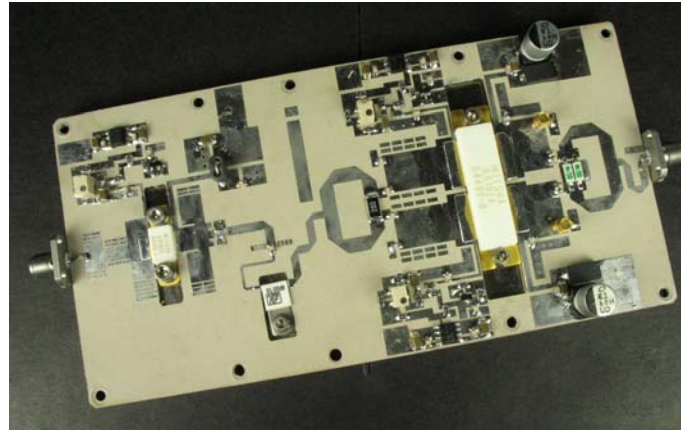
# Part Number: ILP1214EL200 (Preliminary)

# Integra

TECHNOLOGIES, INC.

## L-Band Radar Pallet

Part number ILP1214EL200 is a 50  $\Omega$  matched 2-stage high power pulsed radar pallet amplifier for L-Band radar systems operating over the instantaneous bandwidth of 1215-1400MHz. The pallet amplifier supplies a minimum of 200 watts of peak pulse power under the conditions of 16ms pulse width and 50% duty cycle. All units are 100% screened for large signal RF parameters.



### Silicon LDMOS

- Ultra-high  $f_T$

### Class AB Operation

- Total Bias Current < 600mA

### Single Bias Voltage

- Operates with single 30V supply voltage. Gate Bias provided via voltage regulator.

### Common Source Configuration

### Gold Metal

- Maximum Reliability

### Impedance Matched to 50 $\Omega$

- Ease of Use

### Pallet Carrier

- Nickel Plated Copper Carrier

### Maintained

- 100% RF Screening
- No External Tuning Allowed

### PRELIMINARY DATA

### PRELIMINARY DATA

### PRELIMINARY DATA

Device	Freq (MHz)	V <sub>DD</sub> (V)	P <sub>IN</sub> (W)	IRL (dB)	P <sub>OUT</sub> (W)	G <sub>p</sub> (dB)	I <sub>d</sub> (A)	$\Delta$ G (dB)	Droop (dB)
4520-1	1215	30	1.25	-18.0	241.0	22.85	19.74		-0.15
	1300	30	1.25	-16.0	250.0	23.01	18.92	0.72	-0.17
	1400	30	1.25	-16.0	212.0	22.29	17.44		-0.17

Pulse Format = 16ms, 50%. V<sub>bias</sub>=30V, I<sub>DQ</sub><600mA.

**MAXIMUM RATINGS**

Screen	Parameter	Symbol	Min	Max	Units	Test Conditions
BD	Bias Voltage, Drain	$V_{DD}$	--	55	V	Non-Operating
BD	Bias Voltage, Gate	$V_{GG}$	-0.5	12	V	Non-Operating
BD	Storage Temperature Range	$T_{STG}$	-40	+150	°C	--
BD	Operating Temperature Range	$T_J$	-40	+110	°C	--
Note	Screen 'BD' = parameter qualified By Design.					

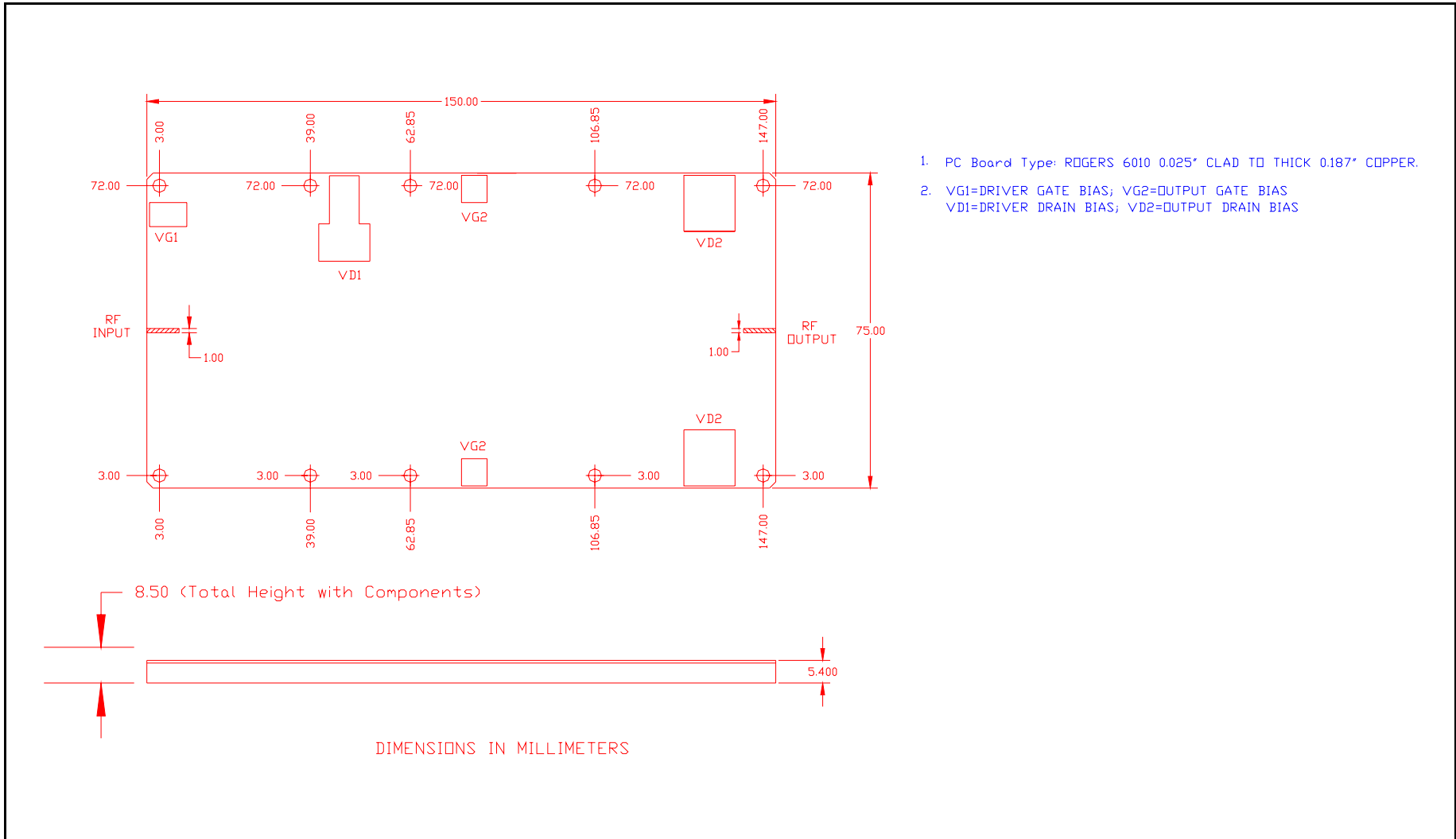
**THERMAL CHARACTERISTICS**

Screen	Parameter	Symbol	Min	Max	Units	Test Conditions
BD	Thermal Resistance – Output Stage Transistor	$R_{TH(JC)}$	--	0.25	°C/W	$V_{dd}=30V, P_{IN}=1.25W, \text{Pulse} = \text{Note 2}, T_F=25\pm 5^\circ C, F=F1, F2, F3.$
Note	Screen 'BD' = parameter qualified By Design.					

**RF ELECTRICAL CHARACTERISTICS**

Screen	Parameter	Symbol	Min	Max	Units	Test Conditions
100%	Input Return Loss	IRL	9	--	dB	$V_{bias}=30V$ , $P_{IN}=1.25\pm0.15W$ , Pulse = Note 2, $T_F=25\pm5^\circ C$ , F=F1, F2, F3.
100%	Output Power	$P_{OUT}$	200	--	W	$V_{bias}=30V$ , $P_{IN}=1.25\pm0.15W$ , Pulse = Note 2, $T_F=25\pm5^\circ C$ , F=F1, F2, F3.
100%	Power Gain	$G_P$	21.55	--	dB	$V_{bias}=30V$ , $P_{IN}=1.25\pm0.15W$ , Pulse = Note 2, $T_F=25\pm5^\circ C$ , F=F1, F2, F3.
100%	Peak Current	$I_{PK}$	--	25.0	A	$V_{bias}=30V$ , $P_{IN}=1.25\pm0.15W$ , Pulse = Note 2, $T_F=25\pm5^\circ C$ , F=F1, F2, F3.
100%	Pulse Amplitude Droop	D	--	-0.7	dB	$V_{bias}=30V$ , $P_{IN}=1.25\pm0.15W$ , Pulse = Note 2, $T_F=25\pm5^\circ C$ , F=F1, F2, F3.
100%	Stability	VSWR-S	1.5:1	--	--	$V_{bias}=30V$ , $P_{IN}=1.25\pm0.15W$ , Pulse = Note 2, $T_F=25\pm5^\circ C$ , F=F1, F2, F3. No oscillatory or pulse break-up characteristics allowed on detected output pulse.
100%	Load Mismatch Tolerance - Ruggedness	LMT	2:1	--	--	$V_{bias}=30V$ , $P_{IN}=1.25\pm0.15W$ , Pulse = Note 2, $T_F=25\pm5^\circ C$ , F=F1, F2, F3. Rotate 2:1 output VSWR through 360° phase. Survival.
BD	Harmonics	$nf_o$	--	-20	dBc	$V_{bias}=30V$ , $P_{IN}=1.25\pm0.15W$ , Pulse = Note 2, $T_F=25\pm5^\circ C$ , F=F1, F2, F3.
Note 1	F1 = 1215 MHz, F2 = 1300 MHz, F3 = 1400 MHz					
Note 2	Pulse format = 16ms, 50%					
Note 3	Total Bias Current: $I_{DQ} \leq 600mA$					
Note 4	$T_F$ = Device flange temperature.					
Note 5	Screen 'BD' = parameter qualified By Design.					

**PALLET DIMENSIONAL OUTLINE DRAWING**



**DEFINITIONS**

<b>Data Sheet Status</b>	
Proposed Specification	This data sheet contains proposed specifications.
Preliminary Specification	This data sheet contains specifications based on preliminary measurements and data.
Product Specification	This data sheet contains final product specifications.
<b>Maximum Ratings</b>	
Stress above one or more of the maximum ratings may cause permanent damage to the device. These are maximum ratings only and operation of the device at these or at any other conditions above those given in the characteristics sections of the specification is not implied. Exposure to maximum values for extended periods of time may affect device reliability.	

**WARNING**

<b>Product and environmental safety - toxic materials</b>
This product contains beryllium oxide. The product is entirely safe provided that the BeO base is not damaged. All persons who handle, use or dispose of this product should be aware of its nature and of the necessary safety precautions. After use, dispose of as chemical or special waste according to the regulations applying at the location of the user. It must never be thrown out with general or domestic waste.

**DISCLAIMER**

Integra Technologies Inc. reserves the right to make changes without further notice to any products herein. Integra Technologies Inc. makes no warranty, representation or guarantee regarding the suitability of its products for any particular purpose, nor does Integra Technologies Inc. assume any liability arising out of the application or use of any product or circuit, and specifically disclaims any and all liability, including without limitation consequential or incidental damages. Integra Technologies Inc. products are not designed for use in life support appliances, devices, or systems where malfunction of these products can reasonably be expected to result in personal injury. Integra Technologies Inc. customers using or selling these products for use in such applications do so at their own risk and agree to fully indemnify Integra Technologies Inc. for any damages resulting from such improper use or sale.
--